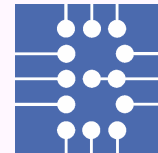


RomDoc

The Future Publication Platform for Romanian Scientists



Centre for Technology Transfer
in the Process Industries (CTTPI)
University “Politehnica” of Bucharest (UPB)



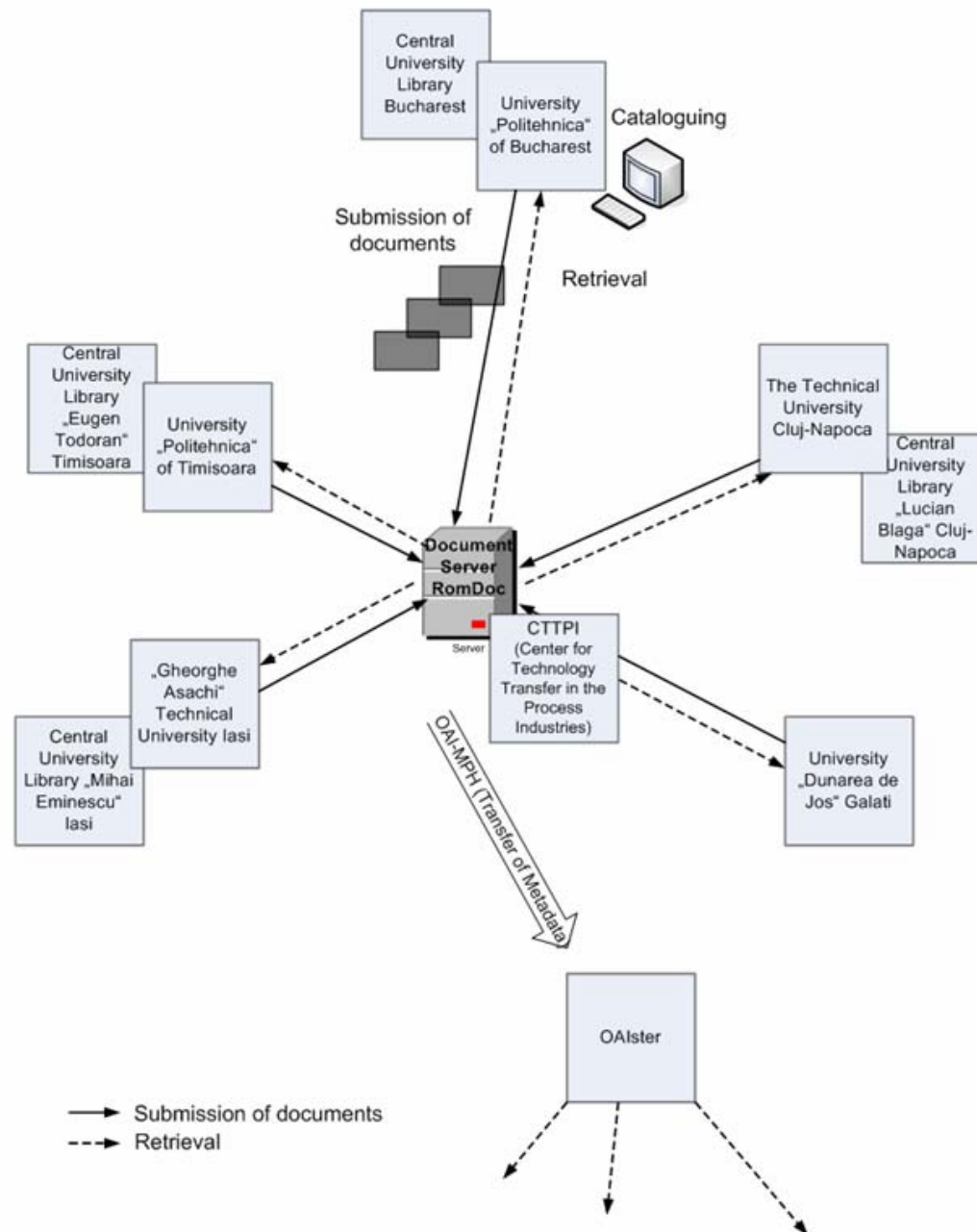
ETH Libraries, ETH Zurich

RomDoc: a SCOPES project

What is SCOPES: Scientific Co-operation between Eastern Europe and Switzerland 2005-2008

What is RomDoc: Cooperation agreement between

- ❖ Swiss National Foundation (financial contributor)
- ❖ Centre for Technology Transfer in the Process Industries (CTTPI), University “Politehnica” of Bucharest
- ❖ ETH Libraries, ETH Zurich



Objectives of RomDoc

Capturing, preserving and disseminating the intellectual capital of Romanian universities:

- ❖ dissertations (scanned or digital born documents)
- ❖ master thesis
- ❖ reports
- ❖ preprints, postprints
- ❖ annual reports
- ❖ teaching and learning material
- ❖ Other relevant scientific papers



to improve worldwide access and visibility of Romanian “grey literature”

Project activities

Technical issues

- ❖ Installation of a central server at University “Politehnica” of Bucharest

Organisational issues

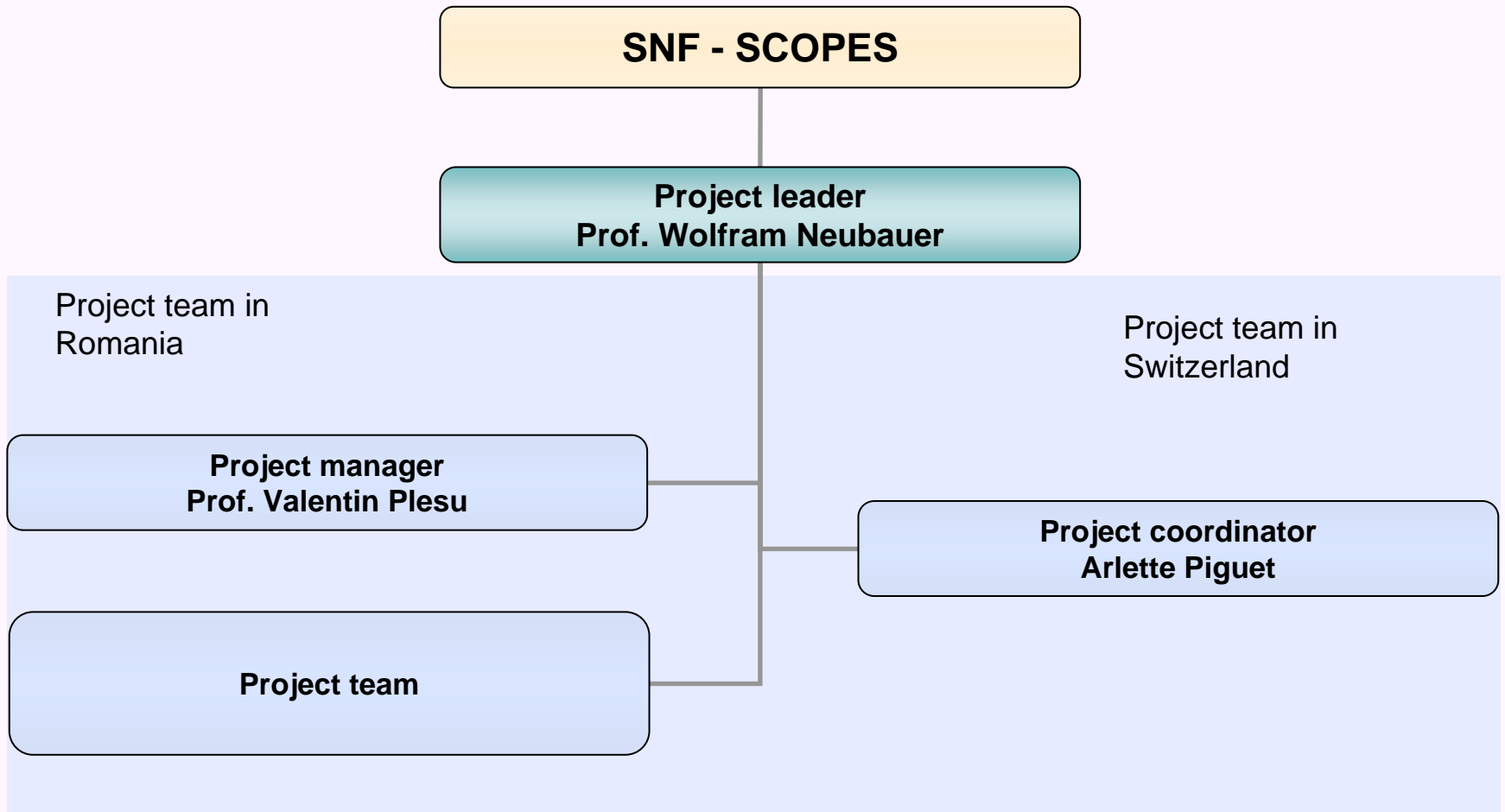
- ❖ Developing a scanning procedure
- ❖ Workflow definitions for document transmission
- ❖ Cataloguing in Aleph

Legal aspects

- ❖ Copyright
- ❖ Internal regulations within the universities

Marketing activities


Project organisation



Romanian project team

❖ Project manager	Valentin Plesu
❖ Scientific responsible	Doina Banciu
❖ Administrative responsible	Petrica Iancu
❖ Procedures responsible / Training resp.	Anca Dumitrescu
❖ Library data responsible / help desk	Carmen Predescu
❖ Server /scanner administrator – hard	Cristian Tacu
❖ Applications administrator (Aleph, CDS Invenio)	Marius Bercaru
❖ Scanning / digitizing	Sorina Cirjan, Voichita Nedelcu

Project Plan: Milestones

- ❖ Project start **Nov. 2005**
- ❖ Installation of Hardware and Software
- ❖ Scanning tests
- ❖ Definition of workflows, cataloguing rules, policy 
- ❖ Training of Librarians
- ❖ Promotion of the service at all partner universities
- ❖ Collection, indexing, storing and dissem. of material
- ❖ Routine Work **June 2007**